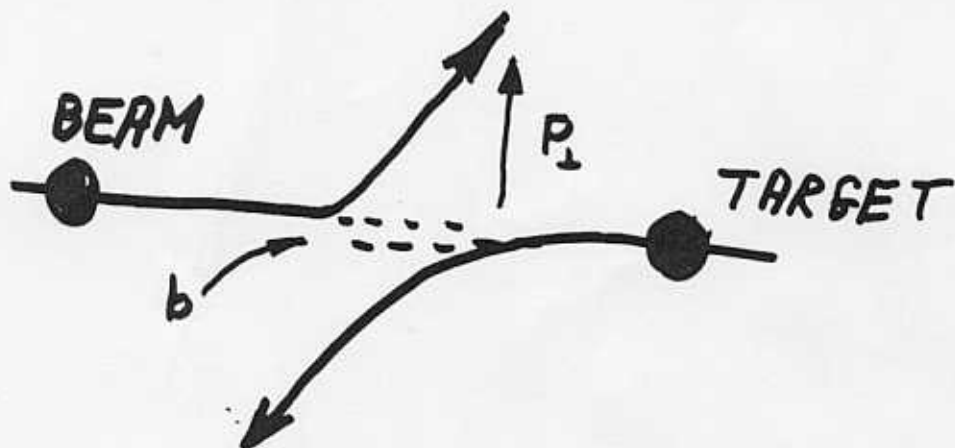


SPIN FORCES IN HIGH- P_{\perp}^2 $p + p \rightarrow p + p$



$$P = \frac{N(\uparrow) - N(\downarrow)}{N(\uparrow) + N(\downarrow)}$$

UNPOLARIZED \Rightarrow $\langle \frac{d\sigma}{dt} \rangle$

BEAM OR TARGET
POLARIZED \Rightarrow ONE-SPIN A_N

BEAM AND TARGET
POLARIZED \Rightarrow SPIN-SPIN A_{NN}